

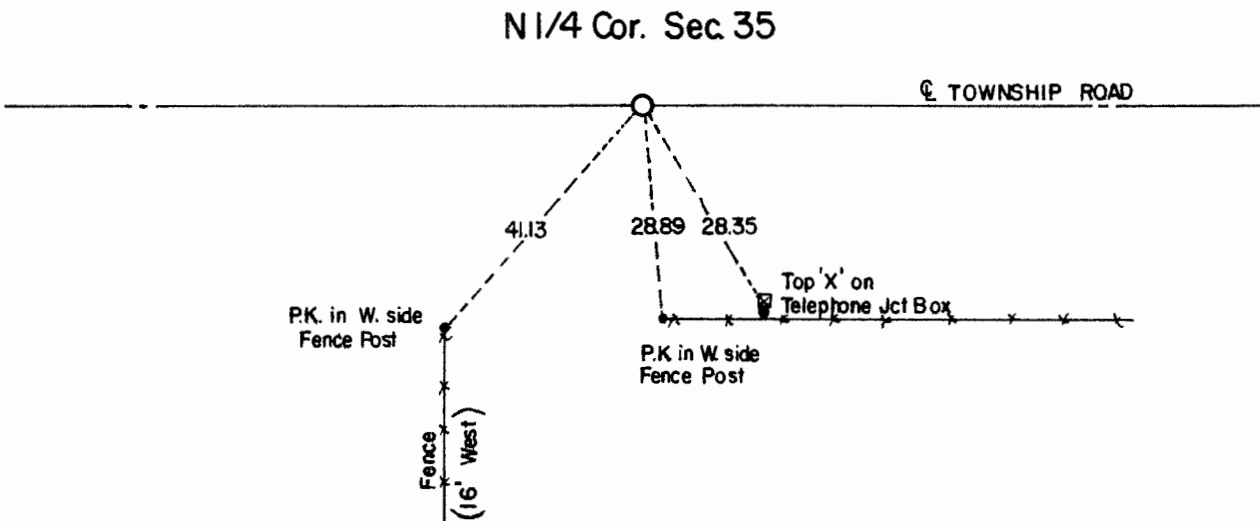
CERTIFICATE OF LOCATION OF GOVERNMENT CORNER

North Quarter Corner of Section **35** , Township **108** , Range **41** 5th P.M.
STATE OF MINNESOTA, County of Murray.

Statement: Aug. 2, 1989 - Found a wooden stake and 5 field stones. Left the monument as found and placed a Minnesota Department of Transportation Cast Iron Monument near the road surface.



SKETCH OF REFERENCE TIES



Statement of evidence relative to this corner location is on the back of page.

I hereby certify that this document and the data contained herein was prepared by me or under my direct supervision and that I am a duly Registered Land Surveyor under the laws of the State of Minnesota.

Duane A. Bonnema

Duane A. Bonnema

Nov 6, 1989

Date

Minnesota Registration No. 14895

OFFICE OF THE COUNTY RECORDER
COUNTY OF MURRAY **NOV 15 1989**

I hereby certify that this document was filed in the County Recorder's office at ___ M. on the ___ day of _____ A.D., 19__

County Recorder *James V. Johnson*

By _____, Deputy

DOCUMENT NO. _____

N 1/4 Cor. Sec. 35 T108N-R41W

Statement:

- August 1861 Original Government Land Office Surveyor L. G. M. Fletcher records in his field notes, "built mound with trench pits, charred stake, per instructions."*
- April 25, 1905 J. W. Woolstencroft, County Surveyor, records in the County Surveyor's Record Book, page 188, that he established the Corner and that he measured to the Corner. However, he does not state what type of monument was placed at the Corner.*
- Gary Martin, LS Reg. No. 12967, placed a capped iron monument at the road surface while doing a survey in Section 35.*
- 1982 The Murray County Highway Engineer's Office shows that they found the monument, placed by Gary Martin, near the surface of the road and they established witness ties to the Corner position.*
- Aug. 2, 1989 Duane A. Bonnema, LS Reg. No. 14895, found a 1/2 inch x 3 inch x 20 inch wooden stake 3 feet below the road surface. Natural ground was also found 3 feet below the surface of the road. Five field stones: 11 in. x 8 in. x 10 in., 10 in. x 8 in. x 8 in., 16 in. x 13 in. x 12 in., 12 in. x 7 in. x 8 in., and 9 in. x 12 in. x 14 in. were found 6 feet below the surface of the road. The 1/2 mile distance to the West is within 1/2 foot of the 1905 Woolstencroft dimension. A Minnesota Department of Transportation Cast Iron Monument was placed 4 inches below the road surface, directly over the location where the 5 stones were found. This is 4.07 feet West of the iron placed by Gary Martin.*